



# SURREY RADIO CONTACT CLUB

85th Anniversary Year - Founded 1935

JULY 2020 – No 935

SRCC supports the RSGB Child Protection Policy

General Club Business: [secretary@srcc.uk](mailto:secretary@srcc.uk)  
 Membership/Treasurer: [membership@srcc.uk](mailto:membership@srcc.uk)  
 Newsletter articles/distribution: [newsletter@srcc.uk](mailto:newsletter@srcc.uk)  
 Club Equipment Loan: [equipment@srcc.uk](mailto:equipment@srcc.uk)  
 Club Website: <https://www.srcc.uk>

## Honorary Secretary & Editor

Quin Collier G3WRR  
 19 Grangecliffe Gardens,  
 LONDON,  
 SE25 6SY

Tel: 020 8653 6948

**Face-to-face meetings are currently suspended for the duration of the COVID-19 pandemic – more details below...**

## SRCC Committee 2019/20

Chairman & Club Meetings	G3ZPB Peter Burton	01737 551413
Vice Chairman & Contest Co-ordinator	G3WRR Quin Collier	020 8653 6948
Hon. Secretary Fund Raising & Newsletter Editor	G8IYS John Simkins	020 8657 0454
Treasurer & Membership Records	G4FFY Ray Howells	01732 357474
Resources & Liaison	G4DDY Maurice Fagg	020 8669 1480
Committee Member and Events	G6JXA Kim Brown	07812 735507
Committee Member	G4LZE Colin Lugard	07534 174388
Publicity	G3MCX John Kennedy	020 8688 3322
Webmaster (Co-opted)	G4FYF Steve Jones	01424 584143

## EDITOR'S OPENER

Dear Members & Friends,

Strictly speaking, this item should be titled "Editor In Chief's Opener" as Peter G3ZPB, Ray G4FFY and I will, for this issue at least, be trying "editing by committee" to try and reduce the individual load involved somewhat. Hopefully this will not affect the look and feel that you are used to, and we will only continue with the approach if it seems to work effectively – but if you do have any comments please let me know....

Well, here we are, now a full three months into lockdown! Fortunately the intensity of the regime

is beginning to be eased off with social distancing being reduced from 2m to 1m – but of course with the possibility that the more stringent regime may have to be reinstated if the infection rate rises again. It seems to me that lockdown has affected us in the amateur radio community in a number of ways, although perhaps less than for some other hobbies as the core of our activity as amateurs is based around communicating with each other at a distance! For me, the most apparent difference is our inability to meet face to face: although we have been able to mitigate the effects to quite a large extent by holding “virtual meetings” it really isn’t quite the same! We experienced this in my working life (now over a decade in the past) with the pressure to use conference calls rather than face to face meetings (Quote “*we are in the communications business after all*” unquote). It worked reasonably well, particularly with a team that was already well established, but did lead to loss of coherence over a period of time - so let’s hope the return to normal continues....but in the meantime let’s keep “virtualising”! The first item that follows looks into the way the SRCC Committee sees things evolving.

So much for philosophising – let’s get onto the real stuff...

## 73, Quin G3WRR

### FUTURE MEETINGS

It is intended to hold a virtual “A” meeting at 8pm clock time on 6<sup>th</sup> July, using Webex. This will consist of a series of “Shack Visits”. Peter G3ZPB will start with showing off his fairly complex computer-controlled shack covering most bands 80m to 70cms. Ray G4FFY will then show us round his shack followed by John G8IYS showing us round Simkins Towers. There will also be time for members to ask questions and comment on their own stations.

Some people find it helpful to install the Cisco Webex App on their computers beforehand, but most of the Internet Web Browsers will work just as well. The meeting number is **163 801 9972**. An e-mail will be sent to all members nearer the date containing the “joining instructions” including the Password. All most people will need to do is to “click” on the green icon embedded within the email to automatically join the meeting.

We are expecting to have to continue with virtual meetings for some weeks yet, but our tentative future meeting programme looks like this:

Date	Location	Topic
20 <sup>th</sup> July	Virtual – Webex	“B” meeting – round-robin [Mtg <b>163 543 7182</b> ]
3 <sup>rd</sup> August	G3ZPB – Old Coulsdon ?	Annual Club Barbeque
17 <sup>th</sup> August	Virtual – Webex	“B” meeting – round-robin
7 <sup>th</sup> September	Virtual – Webex	Using Amateur Satellites
21 <sup>st</sup> September	Virtual – Webex	“B” meeting – round-robin
5 <sup>th</sup> October	Trinity School ?	AGM
15 <sup>th</sup> October	S & CRS ?	Inter-club Quiz
19 <sup>th</sup> October	Trinity School ?	“B” meeting – Fix-it and Skills evening

Obviously, all the meeting locations are subject to being available and the Government COVID-19 regulations being relaxed enough for us to hold the meetings. Further details will be published in future Newsletters and on the website [www.srcc.uk](http://www.srcc.uk). We will also send out an email to all members if there are any urgent changes.

## PREVIOUS MEETINGS

The June virtual A meeting on the first of the month was a presentation on Grey Line Propagation by Quin G3WRR. A detailed write-up of the presentation is not yet available but will be provided for the August Newsletter. One aspect that proved slightly disconcerting from the presenter's point of view was the lack of the non-verbal feedback that is available in a face to face environment, allowing the presenter to tweak his / her presentation on the hoof. But at least it meant that nobody could be seen to be asleep, tutting or shaking their heads....The presentation was followed by a round robin session led by Peter G3ZPB.

The virtual B meeting on 15<sup>th</sup> June was again a round robin session.

## CHAIRMAN'S BLOG

Hello everyone - here we are at the end of June and still no sign of when we might be able to resume holding "normal" face-to-face meetings. At least many people have been able to take advantage of the (mainly) dry and warm weather to get out either in their gardens or further afield. As I mentioned a couple of months ago, we Radio Amateurs are very lucky in having the ultimate "socially distant" hobby.

As with many members, I have been able to get on-the-air more frequently than previously and have had time to make changes to the shack. Because of underlying problems with some Icom rigs (including the IC-9100), I have been using a microKEYER interface box between the computer and rig. This enables control signals, audio signals and several computer programs to all interact with the rig. Unfortunately, it appears the internal processor cannot keep up with decoding multiple data signals (e.g. FT8) while also doing lots of other things. Advances in other software has now enabled me to do everything in the main computer and dispense with the interface box. This has significantly speeded up my FT8 QSO rate and it now works how it is supposed to!!!

I have still been active in contesting, although only one entered this month – the 70cms UKAC but two results have been published. In May I came 49<sup>th</sup> and in June 52<sup>nd</sup>. Both from 157 odd entrants. Unfortunately, in both contests I dropped a few points through logging an incorrect locator. Room for improvement!

I have also been active on some of the club nets and on the HF bands but no new DXCC entities this month. Also activated the museum's "other" callsign MX0HSN for few hours during the International Museums Weekend on 20<sup>th</sup> June; not very successful – half a dozen SSB QSOs is not a lot to show for the effort!!!

Investigating three different formats for our "Virtual Meetings" has also taken some time this week and we have decided to stay with "Webex" as used last month. The free subscription has now ended but the monthly subscription seems a small price to pay to keep us all in contact.

A shorter piece than usual from me this month as I am helping Quin and Ray this weekend "edit" the Newsletter as an experiment in job-sharing. I hope you all continue to stay safe, well and healthy and continue to talk to some of you on the radio and see you at the next Virtual "Shack Visit" Meeting.

**73 and 88, Peter G3ZPB**

## FT4 CONTEST SERIES 2020 – 5<sup>th</sup> EVENT HELD 15<sup>th</sup> JUNE 2020

During 2020 there is a series of nine short duration events on 80m to allow entrants to experience the FT4 machine-generated contest mode. Full details can be found on:

[https://www.rsgbcc.org/hf/rules/2020/r80m\\_ft4.shtml](https://www.rsgbcc.org/hf/rules/2020/r80m_ft4.shtml)

Several SRCC members have been talking part including G3ZPB, G4LZE and G4FFY. The results are now out for up to the 5<sup>th</sup> event held on 15<sup>th</sup> June 2020 (<https://www.rsgbcc.org/cgi-bin/hfresults.pl?Contest=FT4%20Contest&year=2020>).

Ray G4FFY only started with the June event (284pts) but leads both Colin G4LZE (219pts) and Peter G3ZPB (104pts) though Peter only entered the first event in February. There are four events to go so will be interesting how this pans out. Next event is on Monday 27<sup>th</sup> July 2020 at 19:00 – 20:30 UTC.

### 73, Ray G4FFY

## VHF NFD 2020 – THE LATEST

Many of you will be aware that the first full weekend of July is traditionally VHF National Field Day (VHF NFD), in which SRCC has for many years been a participant as part of North East Surrey Contest Group from Warren Barn Farm on Warlingham Ridge. Clearly under the lockdown regime, things had to be different this year. In anticipation of an extended period of lockdown, the RSGB's VHF Contest Committee and Contest Support Committee came up with an ersatz VHF NFD, based on fixed stations, which complied with the lockdown rules that were expected to be in force at the due date (4<sup>th</sup> / 5<sup>th</sup> July). Despite the imminent changes to lockdown, the RSGB has decided that it is far too late to reinstate a traditional style VHF NFD, so the rules will be based on the ersatz fixed station version. All the usual NESCG participants are up to speed with the situation and will be ready to go, but in case other members wish to either take part or to come on and give a few points to club stations, the current rules are shown at the following URL:

<https://www.rsgbcc.org/vhf/rules/2020/VHFNFD.shtml>. In summary, all bands from 6m to 23cm are included, with specified time windows, for each, as follows:

BAND	DATE	TIME (UTC)
6m	Saturday 4 <sup>th</sup> July	1400 - 1600
4m	Saturday 4 <sup>th</sup> July	1700 - 1900
23cm	Sunday 5 <sup>th</sup> July	0500 - 0700
70cm	Sunday 5 <sup>th</sup> July	0800 - 1000
2m	Sunday 5 <sup>th</sup> July	1100 - 1400

Callsigns for NESCG stations may include G0OLX, G3SJX, G3SRC, G3VYI, G3WRR, G3ZPB, G4EFT, G4FFY, G4FYF, G4LZE, G4SDM, G4WGE, G7PWV, G7RAU and G8IYS. The dominant mode will be USB, but there should also be some FM about. Standard information exchange is callsign / date / time / signal report / serial number / locator. It is considered “bad form” to just work members of your own club / group, so it is courteous to work a few (say two or three minimum) other stations too.

If you feel inclined to submit an entry contributing on behalf of SRCC to the NESCG score – and though this would be welcomed, there's certainly no pressure to do so – computer logs can be entered using the RSGB robot at <https://www.rsgbcc.org/cgi-bin/vhfenter.pl?Contest=VHF%20NFD>, remembering to enter the group name North East Surrey CG on the drop-down menu.

And for those who prefer to use paper logging, it is also possible to transcribe your logs at <https://www.rsgbcc.org/cgi-bin/cover.pl> .

Finally, looking on the bright side, this is one VHF NFD for which we won't have to be fretting about what the weather will be doing to us....

## 73, Quin G3WRR

## IYS RAMBLES

It came to me as a bit of a shock to me that a whole year has passed since the blues and twos echoed around my neighbourhood as the carriage provided by London Ambulance Service whizzed me to the Accident & Emergency portal of Croydon University Hospital. Coming more of a shock was realisation that six months had passed since my release (via St George's, Tooting and Hill House, Kenley). My brain seems to be as functional as it ever was, but my mobility is limited, likely to remain so for some time to come and I tire quickly. Thanks to all for the visits and messages of support. Members will know that I have had to relinquish the jobs of Secretary and Newsletter Editor This has given me some time to reflect on what I can do henceforth SRCC-wise.

Passing-on AR News from around and beyond Europe was one idea. Another was Workshop Practices. A third was Nostalgia (including bits with an AR slant). A fourth was what I am (or have been) up to in and outside my shack that might be of use to fellow members.

Let's us start with a nostalgic piece: One of the Freeview channels which I occasionally drop onto is called London Live. Quite regularly it shows a monochrome movie. One which captured me recently was entitled "High Treason". This was made in 1951 and was an early, if not the first, production by the Boulting Brothers. The plot focused on a group of saboteurs, but that was not really what caught my attention. One of the scenes hovered around a radio and electrical repair shop – not unlike one from which I purchased the parts to make my first crystal set at about the same time. The shop counter featured in several scenes, with Props remaining unchanged between scenes over several days. In the centre was half an Army 18 Set - like the pic below.





Another unchanging prop was an array of QSL cards. They were 3 and 4 letter BC station cards, I think - but the definition was not good. Another scene featured the anti-hero sending (good dubbing anyway) real CW to trawlers – using a T1154. - like the pic below:



Another bit worthy of comment was a woman seeking a repair of her electric kettle. Some readers may remember the type with the explosive-ejection mains plug. - guaranteed to dispatch all those with weak hearts within a 50 ft audible range.

A quite different piece of nostalgia comes from a publication from the Croydon Advertiser, entitled: "Yesterday Once More". No date unfortunately, but it was £4.25, and the telephone number of the office began 081 --- I found a monster panorama featuring the R31 airship at Croydon Airport in 1922. The airship is moored at a mast and is surrounded by biplanes. Apparently, the mast took six months to build and cost £25,000. Unfortunately, the mast was built in the wrong place – on private land and without permission. It was only used twice before demolition and was never replaced. OOPS.

Now a couple of gleanings from DUBUS - the VHF-SHF quarterly, written in German and English languages. The first item reports the passing of Dick Knadle K2RIW. Dick was famous for his design of a two high power linear amplifiers- each using a pair of 4CX250B Tetrodes. In my personal opinion: whilst the design of the amplifiers was good, it was what others did in practical realisation which caused just a few problems. Firstly, whilst there were 10s of thousands of ex commercial or military valves on the inexpensive market, their individual pedigree remained a closed book. Furthermore, not only were there VHF and UHF bases out there and difficult to tell the difference between them, but some came from airborne jammers and beckoned the unsuspecting. I will say nothing about the safety aspects of some EHT power supplies except that my previous walk alongside the devil came from contact with such a device.

The second gleaning relates to the 23cm band. The Finnish regulator has withdrawn general access to the 23cm for OH amateurs. This is to free spectrum for one of the two competing new European Satellite Navigation systems. There are some clouds on the 13cm amateur band horizon and worries are growing across the rest of Europe.

Well. That is all of my first punt. I hope that you found something of interest.

### **73. John 'IYS**

## **HERE AND THERE**

I have had a couple of items which may be of interest to SRCC members, both from Mike M1CCF.

The first, as you will see, is an extract from an exchange of e-mails between Mike and a Mrs Bateman in Essex, who is going through the sad exercise of disposing of her late husband's amateur radio gear. If any member is interested in any of this, you may wish to contact the lady – but it might perhaps be worth contacting Mike first to see if there has been any change in availability etc. before doing so. And, at the risk of teaching my grandmother to suck eggs, remember that as is normal e-mail custom, the second e-mail is at the top and the first at the bottom!

### **"[Subsequent e-mail]**

Hi Mike

Thank you for your reply, if you could circulate this email to potential interested people that would be wonderful. To be honest I have no idea what the items in the photo are.

However, I have been told that the other aerals Jeff had are a complete set of Cushcraft A3s or A4s beam antenna and are in a good condition. There are also 10-12 Yagi type antennas by Sigma and I believe they are 10 element again in good condition.

As to price, I really have no idea, all I want is a fair price and to be treated as you would hope your wife/mum/sister would be treated in a similar situation.

If you or any of your fellow radio amateurs wanted to come and have a look at them that would be ok. They are at present at a unit on the Fairview Industrial Estate just off the A13 near Dagenham. My phone number if anyone wanted to arrange a time to come and look at them is, 07885 111369.

Regards, Mary Bateman

**[Initial e-mail]**

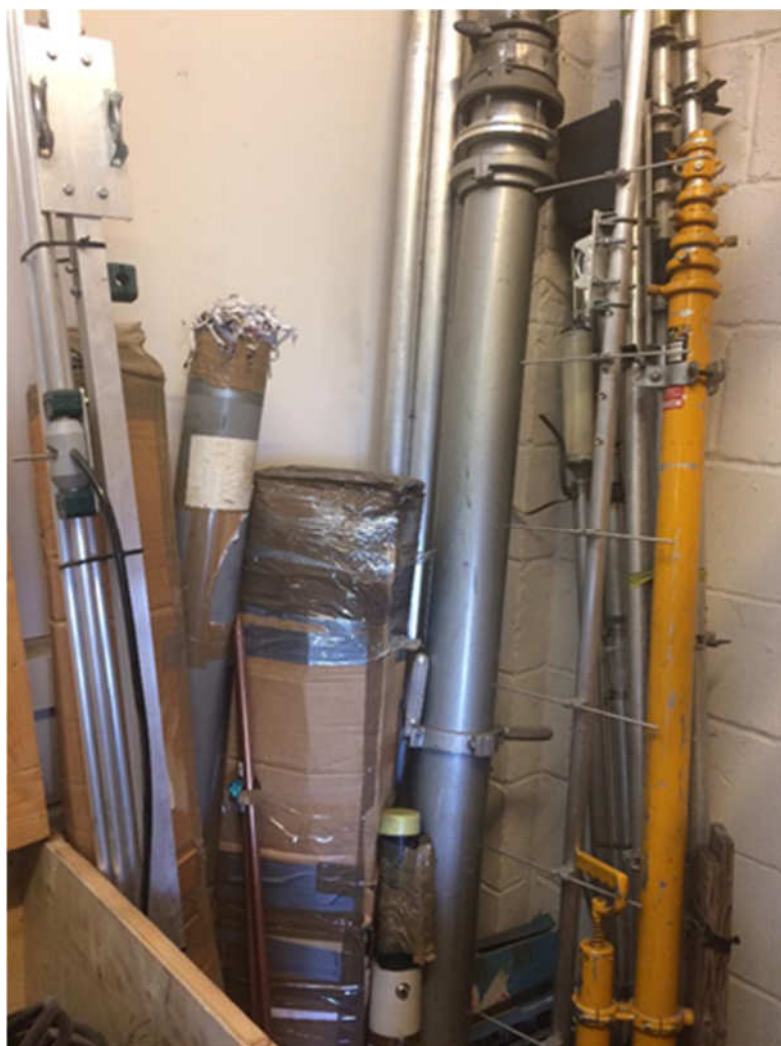
Good Evening,

I wrote to you while ago regarding my late husband's (Jeff Bateman) radio collection and you were kind enough to reply offering further assistance. I have been able to sell the bulk of Jeff's radio collection but we are left with a number of aerals plus a fairly large and heavy telescopic mast. Just wondering if any of your fellow amateurs are looking to add to their aerial collection.

I believe Jeff had a complete Cushcraft A3S or A4S antenna in good condition plus several Yagi type antennas by Sigma (10 element). Plus as I said a very large, very heavy telescopic mast (the big beast in the photo below). There is also a fair amount of cable so could I ask that if you are aware of any likely interest perhaps you could direct them to me.

Regards, Mary Bateman"





The second item may be of particular interest to members who have amateur friends in Germany:

#### **“German Ham Radio Callbook PDF**

Germany's telecommunications regulator, the **Federal Network Agency** (BNetzA), has released a new edition of the Amateur Radio callbook for free download

The Callbook PDF contains amateur station information as at June 1, 2020. The PDF comprises 747 pages which is a significant reduction from that of 5 years ago in June 2015 when the PDF ran to 790 pages.

Download the PDF from:

[https://www.bundesnetzagentur.de/SharedDocs/Downloads/DE/Sachgebiete/Telekommunikation/Unternehmen\\_Institutionen/Frequenzen/Amateurfunk/Rufzeichenliste/Rufzeichenliste\\_AFU.pdf?\\_\\_blob=publicationFile&v=69](https://www.bundesnetzagentur.de/SharedDocs/Downloads/DE/Sachgebiete/Telekommunikation/Unternehmen_Institutionen/Frequenzen/Amateurfunk/Rufzeichenliste/Rufzeichenliste_AFU.pdf?__blob=publicationFile&v=69)

Regulatory information about Amateur Radio in Germany can be seen in Google English at <https://tinyurl.com/BNetzA-Amateur-Radio>

Many thanks to Mike for sending these two items.

## FROM OUR GLOUCESTERSHIRE CORRESPONDENT

### Home Station Updates

The COVID-19 lockdown has somewhat curtailed activities away from home these last few weeks. One down-side is that it has made getting tools and raw materials for projects around the home more difficult, but some things are still available for mail order, and, of course, there's the inevitable stash of potential material stored here and there about the house. By the time this lockdown is over I expect my shed and garage to be slightly less cluttered. What has this got to do with radio? Well, I've taken advantage of the time spent not going out and about, and of the warmer and much drier than usual weather to do some work on my home station's antennas. I decided it was time to get my old ex-military pneumatic mast up, and put my six-band broadband hexbeam antenna on top of it. Thanks to some landscaping work we had done in the garden last year there's now a flat area of ground big enough (just about) to take the mast.



**The mast lying on the small flat area**

While the landscapers were here in March completing their part of the landscaping project, I enlisted the help of one of them to carry the mast up hill to that flat area. I then determined where the mast foot should be and put some concrete into a hole in the ground to give the mast a firm footing. From there, getting the mast upright wasn't too tricky.





**The mast upright and anchored to the ground**

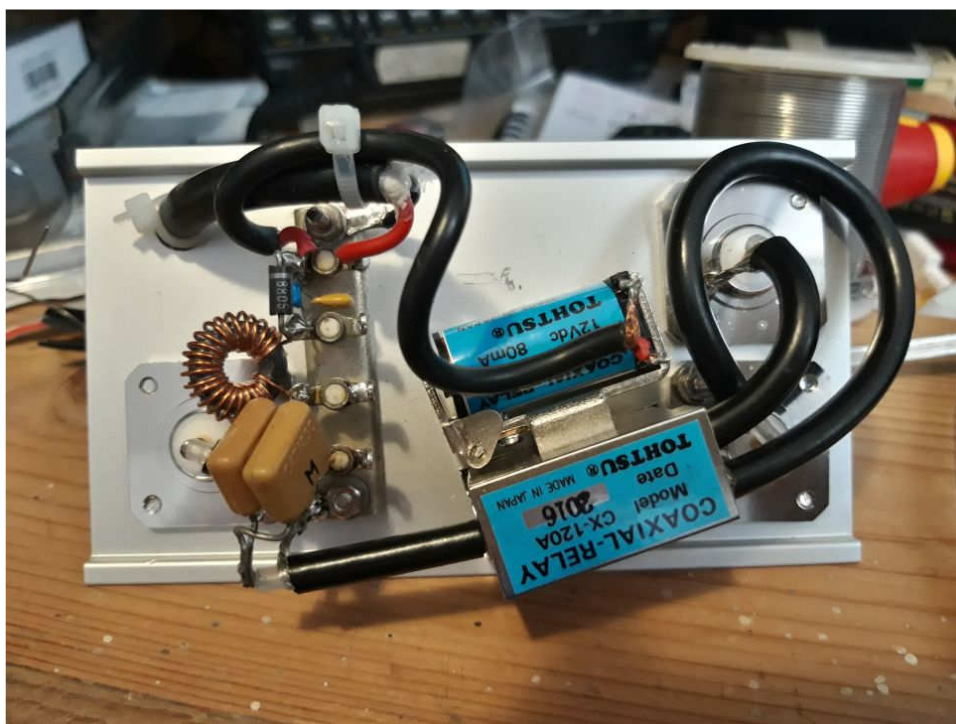
The next problem was getting a feeder and rotator control cable from the shack to the mast. The garden is on a bit of a slope. The flat area upon which the mast stands is quite a few metres higher than the shack. It's not quite as high as the top of the roof, but it's not much lower. There are a couple of major retaining walls in the hillside between the house and the mast. Putting underground ducting through or around them wasn't practical, so taking the feeder and control cable overhead was the only option. I did a bit of research on catenaries, found some steel rope in the garage, and ordered more online (along with lots of other necessary bits and pieces) so that I could string a line from the corner of the house to the mast.

There was only one place from which the house end of such a run could start. For a while now I've been using a long-wire antenna with a CG-3000 automatic matching unit as my only HF antenna. However, the existing HF feeder going to the CG-3000 was running to the other back corner of the house, with the long-wire running from there to one of the tall trees at the back of the garden. At the time I put it up it had seemed like the easiest option, but the route the feeder took round the house was not all that short, and certainly not at all convenient for also getting a feed to the mast. I decided to move the house end of the long-wire antenna to the other end of the house. That would put the HF feeder for it close to the corner from which a feeder could run to the mast. Moving it was the easy bit. The feed to the long wire ended up several metres shorter, and the long-wire also ended up a little higher above the ground. It's also straighter than it was. That's all good.



### **The CG-3000 and the new house-end of the long wire**

While I was re-routing the RF feeder I also put the rotator cable along the same route. Now I had an RF feeder and rotator cable going to the useful corner of the house. I could have put a second HF feeder along the same route, but then there would have been four cables following the route, and I figured I was already pushing my luck with three. I also only had room for three cables in the conduit at the shack end of the run. Clearly, a coaxial switch at the corner would be useful, but it couldn't be one that had to be switched by hand, so a coaxial relay was going to be needed. Power to the CG-3000 is supplied via a pair of bias-tee RF/DC splitters (made for me some years back by John G3ENG) so that the main run of feeder could also carry the power the CG-3000 needed. I figured I could also use that supply to switch a relay. On-line, I found a reasonably-priced one that would work on just a 12V supply, and ordered it. When it arrived, I set about extracting the bias-tee circuitry from the CG-3000 and re-instating its original separate DC feed. Then I put the bias-tee in a box along with the co-axial relay.



### Inside the new bias-tee and coaxial relay box

When power is supplied from the shack via the bias-tee at that end to the relay box, the relay switches the feed to the CG-3000 and power is also supplied to it via its re-instated DC line. When there's no power going to the relay box the RF feed instead goes to the other output of the coaxial relay. A switch and a couple of LEDs at the shack end allow power to be applied to the relay and CG-3000 or not, as required.

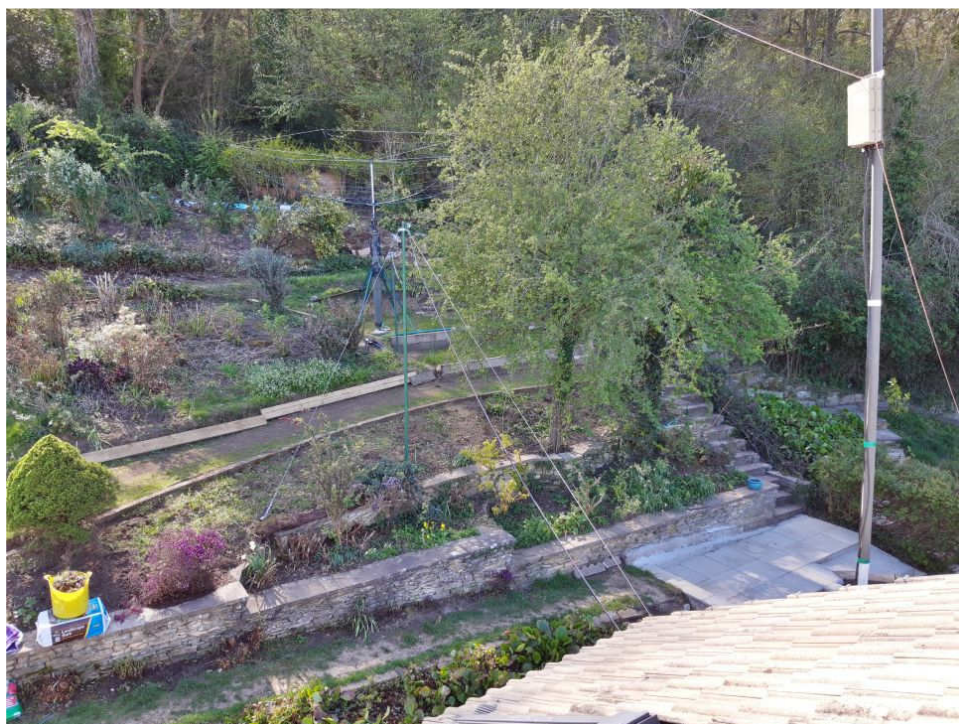
The last link in the antenna system was stringing the feeder and rotator control cable from the corner of the house to the mast. In the end I used two intermediate masts, one a fibreglass pole close to the mid-point of the run, and the other a two-metre piece of scaffold pole to take the strain near the mast. It all took me a little longer than I'd expected to get set up. The dry weather helped, but there were some days when the wind was strong enough that I decided not to work up any ladders or with any tall poles.

By the middle of April, I had the rotator and hexbeam on top of the mast, with a feeder and rotator control cable running all the way to it, and was in a position to use the hexbeam. While the mast can be raised to its full 12 metres, most of the time I have it raised to about half that, and that seems to be high enough for the most part.





**The mast with rotator, hexbeam and necessary cables all ready for raising when required.**



**A view from on top of the roof. The mast and hexbeam is in the centre and the CG-3000 and one end of the long wire are on the right.**

The hexbeam got a little use in April, and a whole lot more in May. It has been used to make contacts, almost all with Summits On The Air (SOTA) operators who are usually running QRP on all the bands it covers (from 20 metres up to 6 metres). With the Sun perhaps waking up a little, and with the summer Sporadic-E season getting started, I'm hoping there'll be some interesting SOTA chasing ahead.

### 73, Rick M0LEP

## SRCC LEAGUE TABLE – MAY 2020

The number of entries in the **CONTACTED** section of the League Table for May 2020 was again seven – from all the usual suspects! There were again no entrants in the **HEARD** section. The monthly tabulation is shown below.

ENTRANT	WORKED DXCC / SQUARE	WORKED SRCC MEMBER	WORKED IN CONTEST	POINTS THIS MONTH
G4LZE	177	1		356
G3WRR	47		47	141
G3EUE	46		37	129
G4FFY	61	1		124
M0LEP	28			56
G3ZPB	21	3	5	53
G4FYF	20	1		42

There has been a significant change around in positions in the table, with six of the seven positions having new occupants since the previous listing. There seem to be two factors causing this: firstly the annual sporadic E season on 6m has started, and secondly one of the major HF contests made some of the less commonly encountered countries available to those who are contest minded. Colin G4LZE maintains his lead, with Quin G3WRR moving up to second place displacing Ted G3EUE to third. Ray G4FFY and Rick M0LEP move up by three and one place respectively, leaving Peter G3ZPB and Steve G4FYF supporting the lower end of the list.

As usual all but one of Colin's contacts were on FT8 – that exception being his usual weekly JS8 sked with Peter G3ZPB. The largest proportion of his HF contacts (36%) were on 17m, followed by 40m (25%), with just 5% on 20m & 10m. From a total of 66 DXCC entities, 37% were outside Europe, including nine (Asia four, North America / South America / Africa / Oceania one each) on 40m and fourteen (Asia and South America four, North America and Africa three each) on 17m. This is a high percentage at this state of the sunspot cycle and good going. But without undermining Colin's efforts, it probably also says a lot about FT8's ability for weak signal processing. And on 6m, he made the most of the sporadic E season, with a total of 111 Maidenhead "big squares" in 30 European countries.

Quin had less than a third of Colin's total of DXCC entities and squares, and although missing the sporadic E on 6m (only managing 10 UK squares) took advantage of the CQ WPX CW contest to pick up some DXCC entities. There was a pleasing amount of activity on 10m, with 43% of his contacts being made on that band, followed by 20m (25%), 15m (24%), 40m (4%), 80m (3%) and 160m (2%). However in contrast to Colin's entry, there was very little DX, with only five out of 37 DXCC entities (two in North America, two in South America and one in Asia) being outside Europe.

Ted's contacts were as usual all on CW on the HF bands. Interesting ones were T6AA in Afghanistan (whatever happened to the YA prefix?!) worked and HZ1TT in Saudi Arabia a got-away.

Ray has again been busy with his recently found liking for FT8 and HF. On HF, he worked 34 DXCC entities, all but four (USA and Australia on 40m, Canada, UAE and USA on 17m) being European. And like Colin, he took the opportunity to take advantage of sporadic E on 6m, picking up 27 squares.

Rick has as usual spent a lot of his time SOTA chasing using his Hexbeam, resulting in around 60% of his claimed score. But given the shortage of summits that can be used in the current lockdown regime he has additionally been experimenting with FT4/8 contributing the other 40%. He comments that as there are now a few SOTA summit stations trying these modes, so it is clearly worth following up!

Peter too has continued to experiment with HF, claiming 16 DXCC entities, mostly on FT8 and within Europe but including J6 (St. Lucia in the Caribbean) which is quite a rare one. He also worked five squares in the 2m & 70cm UKACs – and three SRCC members.

Steve's contacts were mainly on 80m & 40m, but with a sprinkling of short skip on 10m & 6m.

Moving on to the cumulative total for the year, the results are shown below.

ENTRANT	1/ 20	2/ 20	3/ 20	4/ 20	5/ 20	6/ 20	7/ 20	8/ 20	9/ 20	10/ 20	11/ 20	12/ 20	TOTAL
G4LZE	101	125	124	182	356								888
G3EUE	98	104	114	87	129								532
G3WRR		24	57	24	141								246
G3ZPB	24	42	38	84	53								241
G4FYF	23	32	62	48	42								207
G4FFY				6	124								130
M0LEP	16	7	10	10	56								99
G3SRC	78	12											90
G4WGE	6												6

In position terms, the annual table is clearly less susceptible to change than the monthly listings, as individual monthly changes have a smaller percentage effect on the total score.

Nevertheless, although the two leading positions have not changed since last month, there has been quite a bit of movement further down the listing.

The sun has been continuing to tease us..... after a very promising little upward jiggle in the SFI a couple of months ago it lapsed back down to a more stable 72. And just as some of us optimists were hoping that it was building itself up for a big upward spurt..... it dropped back down to 69 – very close to the theoretical minimum! Hum ho, at least we can make the best of the summer sporadic E season while it lasts.....

### 73, Quin G3WRR (SRCC Leaguemeister)



## SRCC NETS

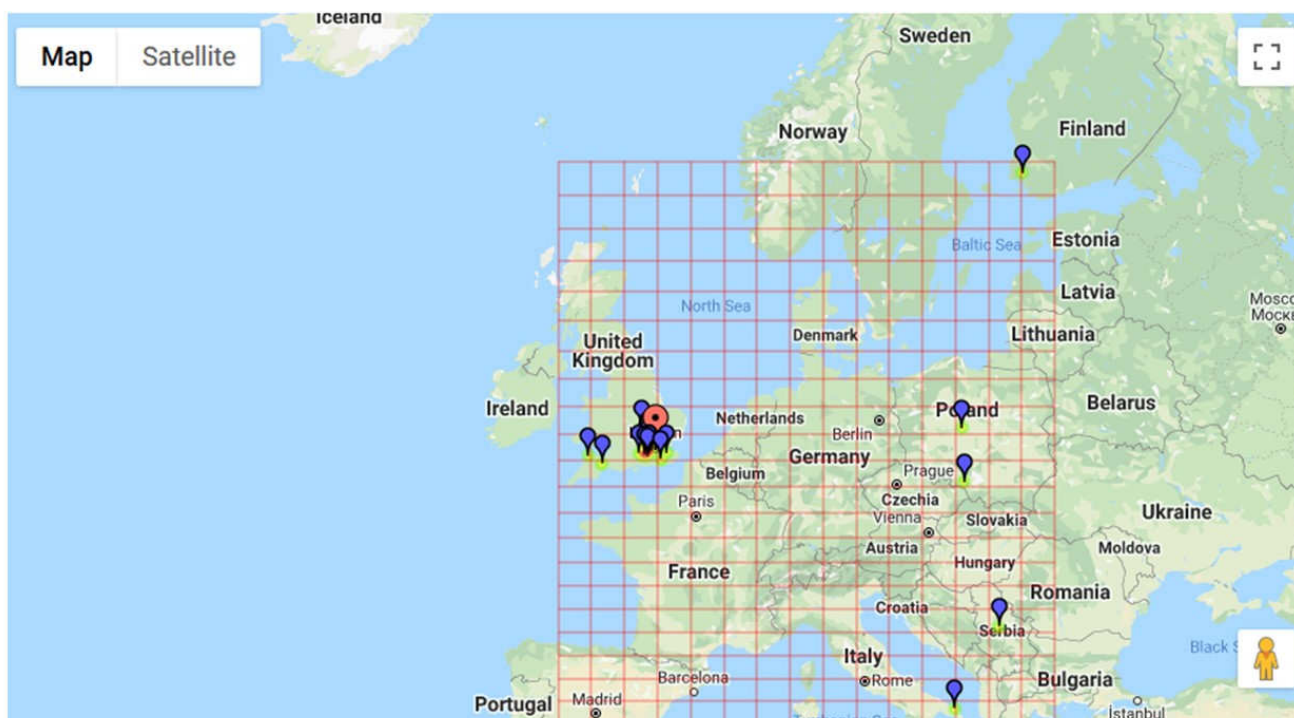
The following is a list of structured nets on which members of SRCC meet regularly. They are sometimes joined by members of other local clubs, who are always made most welcome. The net is not usually led by a nominated controller, but stations normally transmit cyclically in the chronological order in which they sign in. If any member wishes further occasions and frequencies to be added to the table, please let me know at [q.g.collier@btinternet.com](mailto:q.g.collier@btinternet.com).

BAND/FREQUENCY/MODE	DAY OF WEEK	START TIME (clock)
160m / 1905 kHz / LSB	Sunday	9.30 am
10m / 28.078 MHz / JS8	Thursday	10.00 am
4m / 70.30 MHz / FM	Thursday	8.00 pm
6m / 51.55 MHz / FM	Tuesday	8.00 pm
2m / 144.6125 MHz / D-Star	Friday	7.30 pm
2m / 145.35 MHz / FM	Friday	8.00 pm

In addition to the regular Club Nets, several members monitor the local repeater channels, particularly GB3XP (145.6875MHz 82.5Hz CTCSS FM).

## THAT'S ALL FOLKS.....

This doesn't really count as "that's all folks" type stuff, but it is certainly "Stop Press" so I've included it here at the end! If you have been reading the SRCC League Table items recently, you will have noted references to sporadic E and its propagation possibilities, particularly on 6m. I took part in the RSGB 6m CW Contest this morning and we were favoured by a fairly healthy dose of it (well planned, Contest Committees). One of the items produced by the Contest Committee for each entrant is a map showing his / her contacts on a map. The one for my entry is shown below.



This is not included to give me bragging rights (although they do say that if the cap fits, wear it...), but to show the difference between the ranges achievable by traditional VHF tropospheric propagation (tropo) - all the little blue marks crowded into Dear Old Blighty - and that achieved using sporadic E - the rest I found this a particularly impressive demonstration so though it was worth sharing with you!

Not a lot more to say, so enjoy your Newsletter and I wish you all the best – and keep COVID-19 free!

**73, Quin G3WRR**